



342,720 +/- SF Available  
(Divisible)  
Q3 2025 Delivery

# LogistiCenter<sup>®</sup> at Airport West

3615 Kramers Lane, Louisville, KY 40216

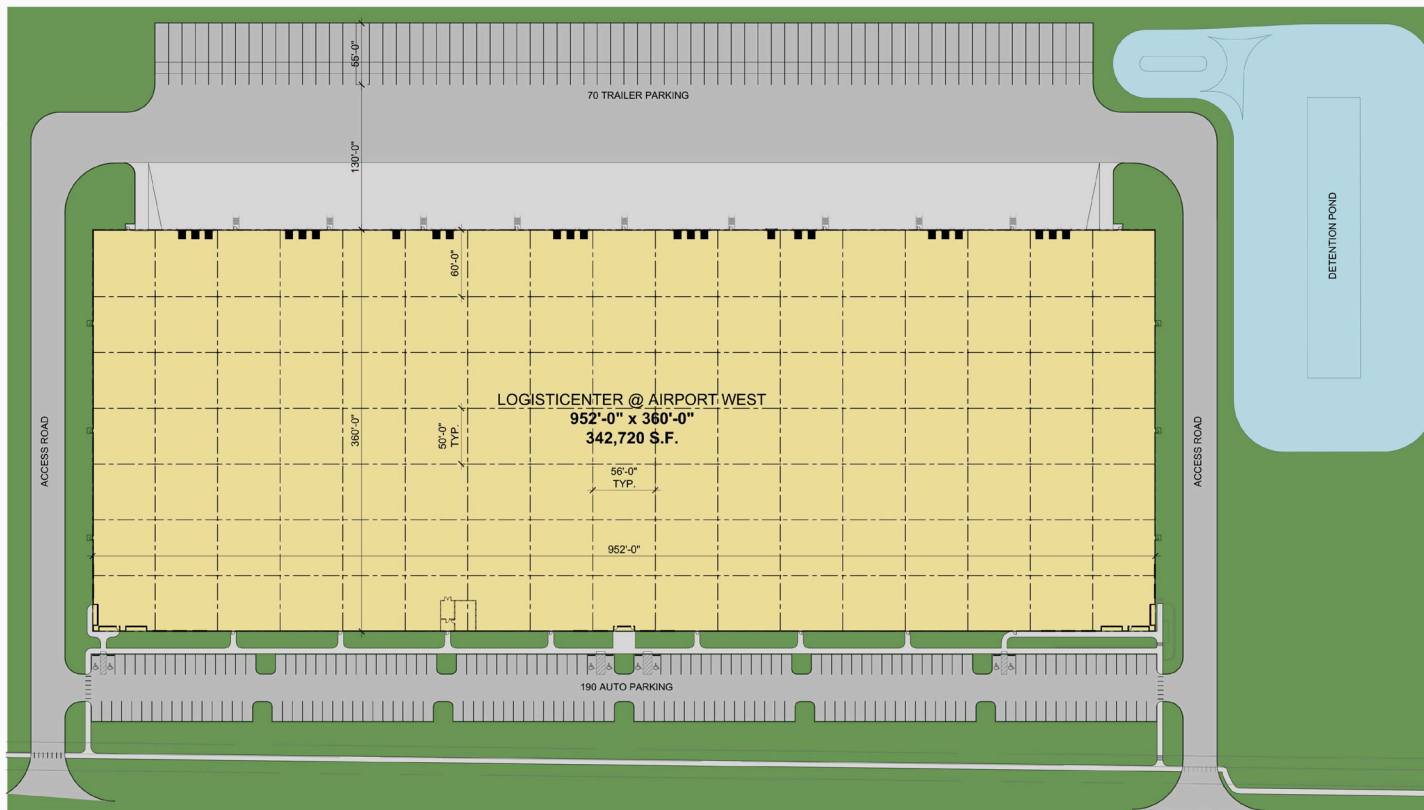


**CBRE**

[Dermody.com](https://www.Dermody.com)

# Building Specifications

## LogistiCenter® at Airport West



 **SITE PLAN**  
0 40 80

### Property Specs

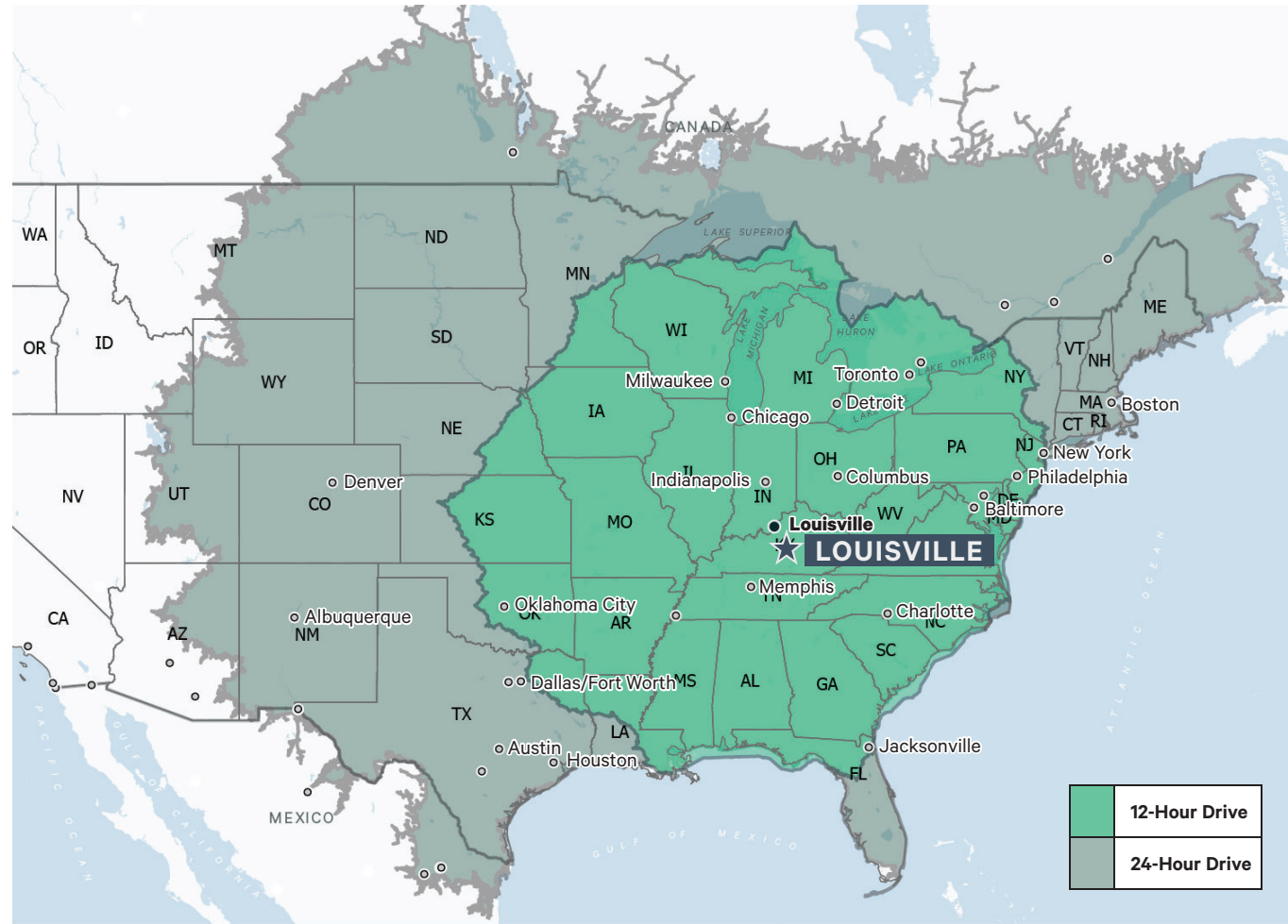
- 342,720+/- SF available
- 952' X 360' building dimensions
- 60' speed bay
- 56' X 50' typical column spacing
- 24 equipped dock doors
- 2 drive-in doors
- 36' clear height
- 190 car parking spaces
- 70 trailer parking spaces



# Strategic Logistics Location

## Why Louisville?

Louisville's central location is key to its success as one of the Midwest's most important business hubs. Located within a 12-hour drive of 54% of the US population, Louisville is only a day away from the Great Lakes, the Gulf of Mexico, and the Atlantic coast. UPS Worldport, one of the world's busiest and most efficient air cargo hubs, processes up to 1.6 million packages per day, calls Louisville "home". Additionally, with three major US Interstate highways running through the city center, commerce and Louisville go together like bourbon and mint on the first Saturday in May.



### #1

OHIO RIVER CORRIDOR  
METRO AREA  
*Site Selection Magazine,*  
2023

### #5

US METRO AREA  
FOR ECONOMIC  
DEVELOPMENT  
*Site Selection Magazine,*  
2023

### #5

BUSIEST CARGO  
AIRPORT IN THE WORLD  
(3.1M TONNES)  
*Airports Council*  
*International, 2022*

### 54%

US POPULATION  
WITHIN A 12-HOUR  
DRIVE OF LOUISVILLE  
*American Community*  
*Survey, 2023*

### 82%

US POPULATION  
WITHIN A 24-HOUR  
DRIVE OF LOUISVILLE  
*American Community*  
*Survey, 2023*

# Strategic Logistics Location

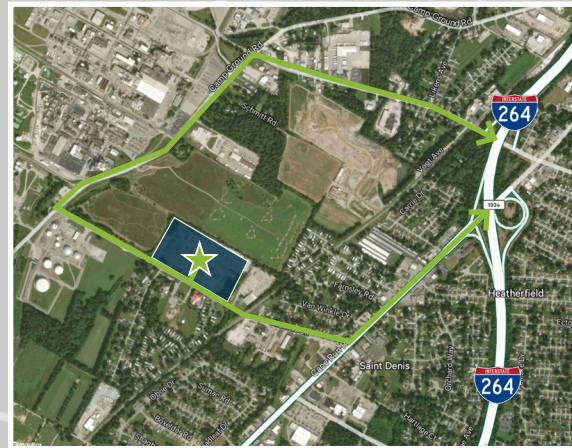
## Louisville Market Map

### Southside/Airport Submarket Highlights

UPS Worldport processes 416,000 packages per hour and facilitates ~300 flights per day.

Ford Louisville Assembly Plant currently has ~4,100 employees and manufactures the Ford Escape and Lincoln MKC.

GE Appliance Park opened in 1953 and currently has 8,500 employees.



2 potential routes to I-264





# Strategic Logistics Location

## LogitiCenter® at Airport West

LogitiCenter® at Airport West is strategically located on the western edge of the highly coveted Southside/Airport submarket, which has historically low vacancy due to its proximity to major market drivers such as UPS Worldport, Ford Louisville Assembly Plant and GE/Haier Appliance Park.





**LogistiCenter®**

**at Airport West**

3615 Kramers Lane, Louisville, KY  
40216

## About Dermody Properties

Dermody Properties is a privately-owned real estate investment, development and management firm that specializes in the acquisition and development of logistics real estate in strategic locations for e-commerce fulfillment centers, third-party logistics and distribution customers. Founded in 1960, Dermody Properties has invested more than \$10 billion of total capital across all platforms nationwide, having acquired and developed approximately 110 million square feet of logistics and industrial facilities. In addition to its corporate office in Reno, Nev., it has regional offices in northern and southern California, Atlanta, Phoenix, Seattle, Chicago, Dallas, Indianapolis and New Jersey. For more information, visit [www.Dermody.com](http://www.Dermody.com).

## About the LogistiCenter® Brand

LogistiCenter® is a national trademark brand, owned and developed by Dermody Properties. It represents the firm's business philosophy of developing Class A distribution facilities that meet the supply-chain requirements of the most innovative companies. All LogistiCenter® facilities are designed to meet best practices in sustainable design and construction, and incorporate building features, such as additional clear height and extra trailer and car parking, that enable companies to execute their operations more effectively and efficiently.

© 2023 CBRE, Inc. All rights reserved. This information has been obtained from sources believed reliable but has not been verified for accuracy or completeness. CBRE, Inc. makes no guarantee, representation or warranty and accepts no responsibility or liability as to the accuracy, completeness, or reliability of the information contained herein. You should conduct a careful, independent investigation of the property and verify all information. Any reliance on this information is solely at your own risk.

**CBRE**

**Kevin A. Grove, CCIM, SIOR**  
CBRE

Executive Vice President  
(502) 412-7615  
[kevin.grove@cbre.com](mailto:kevin.grove@cbre.com)

**Alex P. Grove, CCIM**  
CBRE

Senior Associate  
(502) 412-7655  
[alex.grove@cbre.com](mailto:alex.grove@cbre.com)



[Dermody.com](http://Dermody.com)